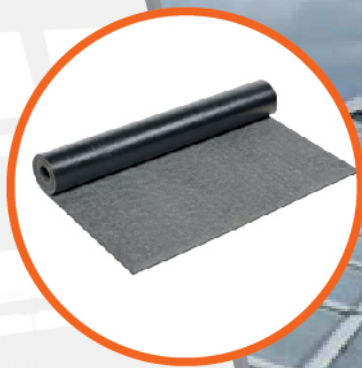


# RK SEAL<sup>®</sup>

## EPDM WATERPROOFING MEMBRANE

0.75mm, 0.8mm, 1.0mm, 1.2mm, 1.5mm, 2.0mm



[www.kastrade.com](http://www.kastrade.com)

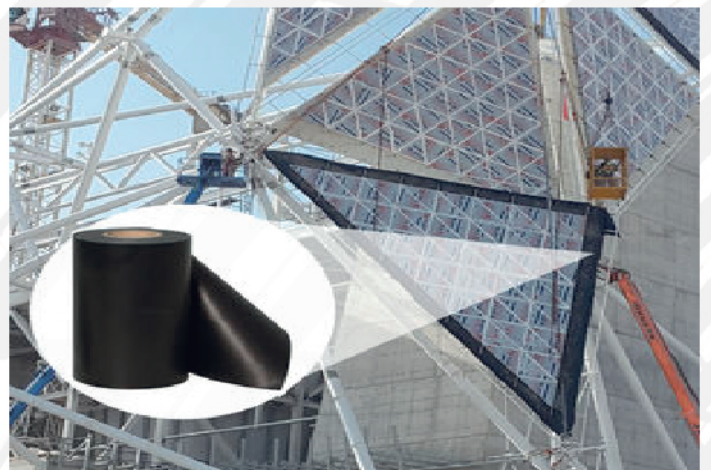
**KASTRAD**

Khalid Al Saleh Trading Co. L.L.C.

# EPDM RUBBER Waterproofing Membrane

RKSEAL® Waterproofing Membrane is a high performance, extremely durable Waterproofing Membrane Developed by R K Profiles Pvt Ltd. Faridabad, INDIA based on EPDM Rubber which is the most proven elastomer in the field of Waterproofing. EPDM Rubber has excellent resistance to UV & ozone, weather ability, high temperature resistance, and very good sealing properties. These Membranes are highly recommended for waterproofing of Basements, Roofs, High Rise Facades, Airports, Stadiums, Swimming pools, Soak Pits as well as Protection from Subsoil Water Seepage in Tanks, Canals, etc.. The Membrane has also a very low water vapor transmission factor. It retains its flexibility and properties to serve a long life expectancy of 20 years.

RKSEAL® Waterproofing Membrane does not affect solvent sensitive paint finishes and are compatible with most of the structural sealants which may come in contact with the Membranes. The Membrane is produced in accordance with ASTM D 4637 & ASTM D 6134. The sheet confirms the minimum requirement for non-reinforced Black EPDM Rubber sheet for use in waterproofing. It is available in 0.8 mm, 1.0 mm, 1.2 mm, 1.5mm and 2.0 mm thickness, and width from 1.0 mtr. to 1.5 mtrs.. The Roll length varies from 10 mtrs. to 30mtrs..





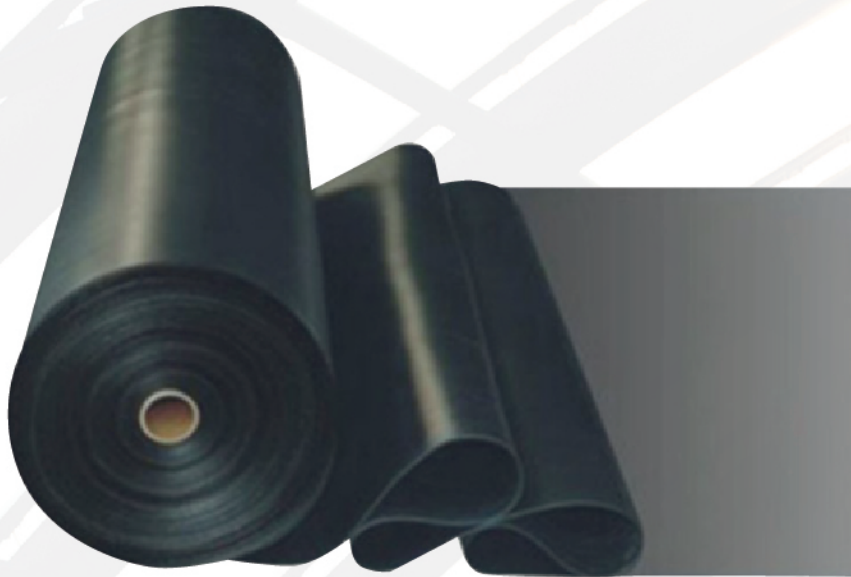
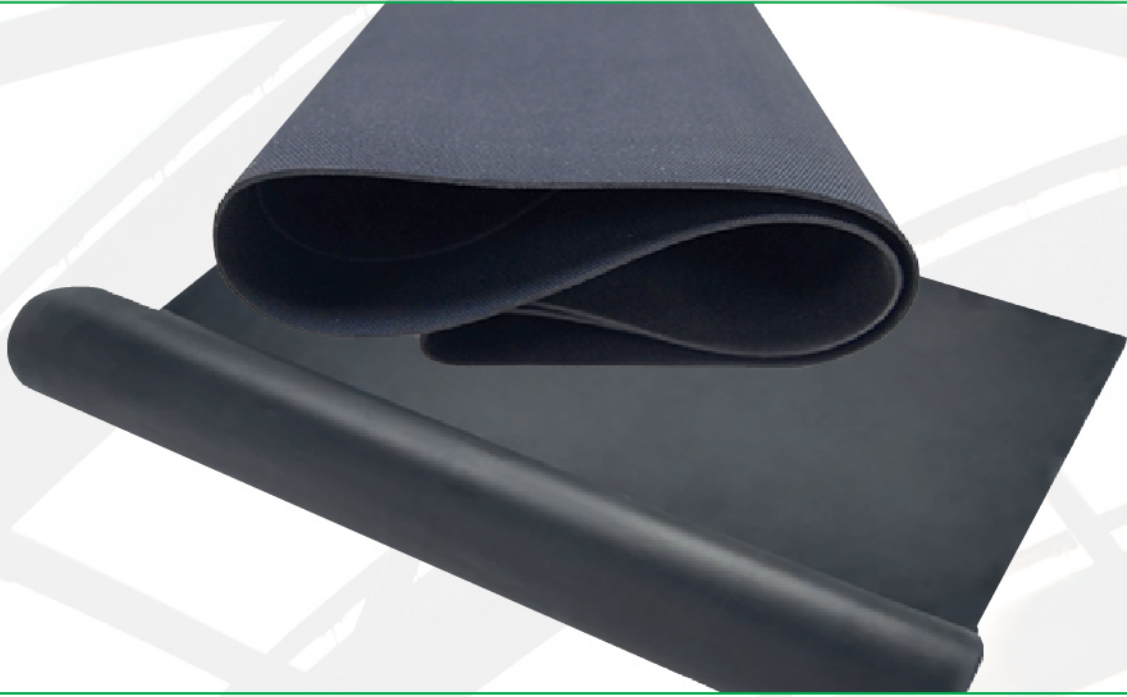


## CHARACTERISTICS & TEST STANDARDS

ITEM	:	EPDM Rubber Membrane/Sheeting (RK-SEAL)
SIZE	:	0.75mm, 0.8mm, 1.00mm, 1.2mm, 1.5 mm, 2.0mm - Thickness
MATERIAL	:	Ethylene Propylene Di-ene (conjugated) Monomer - EPDM
STANDARDS	:	As Per ASTM D4637
COLOUR	:	Black
FINISH	:	Rough / Fabric or Smooth

### PHYSICAL PROPERTIES, TEST STANDARDS AND RESULTS OF A TYPICAL EPDM MEMBRANE/SHEETING

S. No.	Characteristics Tested	Standard Followed	Typical Results
1.	Hardness (Shore A)	ASTM-D2240	60 <sup>0</sup> (+/-5 <sup>0</sup> )
2.	Tensile Strength (Kgf/cm <sup>2</sup> )	ASTM-D412	> 90
3.	Elongation at Break (%age)	ASTM-D412	> 300
4.	Tear Strength (Kgf/cm)	ASTM-D624	26.20
5.	100% Modulus (Kgf/cm <sup>2</sup> )	ASTM-D412	-
6.	Specific Gravity	ISO-2781	1.23
7.	Compression Set (max. %) At 100 <sup>0</sup> for 22 Hrs.	ASTM-D395	28
8.	AGE RESISTANCE	ASTM-D573	
a.	Hardness		+7
b.	Tensile Strength (%)		+12
c.	Elongation at Break (%)		-22
9.	Ozone Resistance	ASTM-D1149	No visible Cracks
10.	Resistance to Water Absorption (After 7 days in immersion at 70 <sup>0</sup> C) Change in Mass, max%	ASTM D471	2.0
11.	Resistance to Outdoor (Ultra-Violet) WeatheringXenon-Arc 7560kj/m <sup>2</sup> total radiant exposure at 0.70 W/M <sup>2</sup> irradiance 80 <sup>0</sup> C black panel temperature	ASTM G 26	No cracks No crazing
12.	Thermal Conductivity (W/m-K)		< 0.25
13.	Chlorine Content (PPM)		Nil
14.	Dielectric Constant V/mm. (At 25 <sup>0</sup> C)	ASTM D150	2.40



# **KASTRADE**

Khalid Al Saleh Trading Co. L.L.C.

## **CORPORATE OFFICE**

802#, Faya Business Park Tower,  
Buhelrah Cornishe, Al Majaz II  
P.O. Box 39380, Sharjah - U.A.E.  
Tel: +971 6 574 9909  
Fax: +971 6 574 5696  
contact@kastrade.com  
kastrade @emirates.net.ae

## **WAREHOUSE**

No. 9, Street No. 21,  
Ind. Area 11, Sharjah - U.A.E.  
Tel: +971-6-5348890  
Fax : +971-6-574 5696

contact@kastrade.com  
kastrade @emirates.net.ae

## **BRANCH OFFICE**

P.O. Box 105437, Exit 17,  
Madina Al Munawarah Road  
Falsallah, RIYADH 11646. KSA  
Tel: +966-11-270 8028  
Fax : +966-11-2708319  
contact@kastrade.com  
maharoor@alsaleh.sa



[www.kastrade.com](http://www.kastrade.com)